

CHARACTERISTICS AND ADVANTAGES

68 Q-MC RANGE

INNOVATION AND DESIGN

The Q-MC RANGE 68 is the new and innovative proposition for power distribution and service supply system in environments such as marinas, campsites, urban and public areas (trade fairs, markets etc.), where, besides highly reliable technical performance, a pleasant design blending harmoniously with the surrounding environment is required.



EMPTY TERMINALS

The empty versions are suitable for free configuration by the customer who can choose the Prearranged Assembly System's more than 4000 different combinations, all easily certifiable as AS boards.

It is also possible to execute multifunctional terminals housing electronic equipment or various services.

GW ASSEMBLED

AND WIRED TERMINALS

A wide offer, in terms of dimensions and configurations, of factory-wired versions fully compliant to the requirements of the EN 60439 Standard. They meet the most frequent configuration needs in terms of power distribution, technical signs and water.

CUSTOMISED ASSEMBLED AND WIRED TERMINALS

GEWISS also proposes the execution and supply of assembled and wired terminals, customised according to possible special customer requirements. Contact the Customer Technical Assistance Service (SAT) to find out about feasibility, quotes and delivery times for special versions.

68 Q-MC RANGE

ENERGY AND SERVICES DISTRIBUTION TERMINAL SYSTEM



CHARACTERISTICS AND ADVANTAGES

68 Q-MC RANGE



◀ TOTAL SAFETY

The insulating materials employed ensure increased protection against electric shocks. Power supply is ensured by the installation of GEWISS IEC 309 plugs and sockets, which have always been synonymous with safety and reliability in every application context.



▶ ERGONOMIC DESIGN

The shapes and sizes of all terminals have been designed to offer the user maximum comfort. The rounded shapes meet the strictest accident prevention requirements.

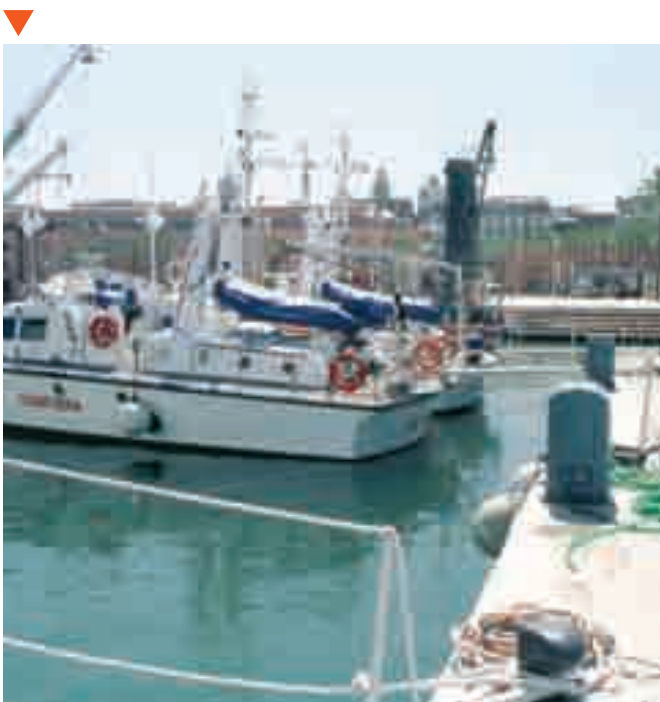


▶ FLEXIBILITY

The special flanged panels offer a wide range of configurations, allowing the installation of interlocked and non-interlocked industrial and domestic sockets with various levels of protection.

HIGH RESISTANCE TO EXTERNAL AGENTS

The use of highly reliable technopolymers employed ensures maximum resistance to atmospheric, mechanical and chemical agents and, together with stainless steel used in all metal components, ensures high UV, rain and marine environment resistance. The use of technopolymers coloured at source avoids the need for painting the product, thus preserving its aesthetic and performance characteristics over time.



▶ ENVIRONMENTAL INTEGRATION

The coloured thermoplastic external coating ensures maximum integration with the surrounding environment while making identification easier.

In particular, the new white colour ▶ offers a more elegant result in perfect harmony with the surrounding landscape.



CHARACTERISTICS AND ADVANTAGES

68 Q-MC RANGE

APPLICATIONS:



TOURIST HARBOURS

The ideal solution to supply energy and services both for floating piers and quays. Intelligent versions are also available which are arranged for prepaid or centralised management solutions.



CAMPsites

They facilitate and make safe the connection of caravans, camper vans, mobile homes, trailer-tents etc. easier. Prepaid or centralised management solutions are possible also on campsites.



URBAN AREAS

Highly reliable technical performance combined with a pleasant design and in harmony with street furniture requirements for squares, markets, fairs and multipurpose areas.



GARDENS, PARKS

A technical point for power distribution, technical signals such as SAT TV, Internet, telephony and water distribution, completely integrating with the environment in both shape and colour.



68 Q-MC RANGE

ENERGY AND SERVICES DISTRIBUTION TERMINAL SYSTEM

CHARACTERISTICS AND ADVANTAGES



◀ BLOCKS OF FLATS, CAR PARKS

For the installation of monitoring devices and for supply with plugs and sockets of lighting circuits and service machinery.

FAIRS, FESTIVALS, CONCERTS, ROAD SHOWS

A sturdy and easy to transport product for power distribution at all temporary events



◀ INDUSTRIAL AREAS

Flexibility and strength make the product suitable to supply energy and services from the ground to external and internal industrial areas.

FIRE POINTS

Versions equipped with fire-hose connection or fire extinguisher allow the creation of fire intervention points.



68 Q-MC RANGE

ENERGY AND SERVICES DISTRIBUTION TERMINAL SYSTEM

GEWISS

CHARACTERISTICS AND ADVANTAGES

68 Q-MC RANGE

NEW PROTECTION CLASS: IP56

The new IP56 protection class allows the 68 Q-MC range terminals to resist in those environmental conditions where strong washing and sea storms are to be taken into consideration due to the proximity to docks, basins and ports. IP56 rating means that the casing can withstand waves at a rate of 100lt/min.

The modification introduced aims at enhancing the ability of the range to be installed in critical conditions.

NEW

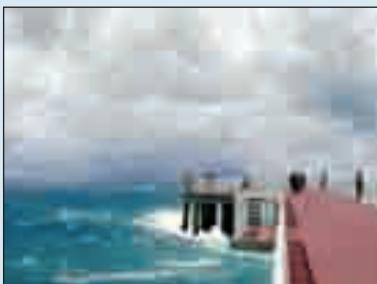


IP56 RATING IS OBTAINED BY CONNECTING ONLY WALL-MOUNTING POWER POINTS TO THE TERMINALS IP67

16÷125A



APPLICATION FIELDS



QUAYS



HARBOURS



SERVICE STATIONS

68 Q-MC RANGE

ENERGY AND SERVICES DISTRIBUTION TERMINAL SYSTEM

CHARACTERISTICS AND ADVANTAGES

Q-MC 68 BLUE TERMINAL CODES ARE MARKED WITH SUFFIX A.

EXAMPLE: **GW 68 705 A**

BLUE
PANTONE
5415

INSTALLATION ADVICE



TOURIST HARBOURS



CAMPITES



68 Q-MC RANGE

Q-MC 68 WHITE TERMINAL CODES ARE MARKED WITH SUFFIX W.

EXAMPLE: **GW 68 705 W**

WHITE
RAL
7035

INSTALLATION ADVICE



DISTRIBUTION BOARDS FOR LIGHTING IN
PUBLIC PLACES, FOR THE RAILWAY SECTOR



INDUSTRIAL AREAS



68 Q-MC RANGE

ENERGY AND SERVICES DISTRIBUTION TERMINAL SYSTEM

GEWISS

CHARACTERISTICS AND ADVANTAGES

68 Q-MC RANGE

COMPACT TERMINALS WITH NOMINAL CURRENT UP TO 63A

THE ADVANTAGE OF COMPACTNESS

The new compact range of power and service distribution terminals is the answer to any installation problems in tourist harbours and especially on floating piers, in campsites, in urban areas and public spaces, at temporary events and for all those applications where easy handling and small size are all-important.

FIRE PREVENTION

The offer is completed by three fire-prevention versions, immediately ready for installation, either equipped with hose or arranged for holding an extinguisher.



FLEXIBILITY

It is possible to equip each one of the 4 models (Q-MC 16 B, Q-MC 16 T, Q-MC 63 B, Q-MC 63 C) with five different flanged panels which can house combinations of domestic and industrial interlocked switched and non-interlocked socket-outlets from 16 A up to 63 A.

PROTECTION

The control unit panel with 16 modules on two lines allows installation of 90 Range modular protection and command devices. The MTC and MDC residual current circuit devices and compact residual current circuit breakers allow maximum optimisation of space.

68 Q-MC RANGE

ENERGY AND SERVICES DISTRIBUTION TERMINAL SYSTEM



CHARACTERISTICS AND ADVANTAGES

68 Q-MC RANGE



Q-MC 16 B

An extremely compact version, ideal for energy and services distribution in all residential and commercial environments such as houses, gardens, parks, blocks of flats, sport facilities, etc.



Q-MC 16 T

This extremely handy and easy to carry model, that is also very sturdy, is ideal for movable and temporary systems such as in trade fairs, festivals, markets, concerts and shows in general.

Q-MC 63 B

Specially designed and created for piers, this terminal provides a first-rate solution also for squares, urban areas, markets and industrial areas.



Q-MC 63 C

The new compact solution with a small price tag, designed for campsites and caravan and camper parking facilities, for systems compliant with part 7 of the CEI 64 / 8 Standard.



MAXIMUM NUMBER OF SOCKETS AND ACCESSORIES INSTALLABLE BY TYPE

	SBF INTERLOCKED IP 44 Horizontal IP55 Vertical IP 44/55 Combibloc	NON INTERLOCKED	ITALIAN/GERMAN STANDARD DOMESTIC	TV/SAT TELEPHONE- INTERNET DATA SOCKETS	TAPS	LIGHTING (O= ORDINARY, E= EMERGENCY)
Q-MC 16 B	2 at 16/32A	4 at 16/32A	4 at 10/16A	8	2	1 (O/E)
Q-MC 16 T	4 at 16/32A	8 at 16/32A	8 at 10/16A	-	-	1 (O)
Q-MC 63 B	4 at 16/32A 2 at 63A*	8 at 16/32A	8 at 10/16A	16	2o4	1 (O/E)
Q-MC 63 C	4 at 16/32A	8 at 16/32A	8 at 10/16A	16	2o4	1 (O/E)

* IP 55 vertical only.

STANDARD AND HIGH CAPACITY TERMINALS WITH NOMINAL CURRENT UP TO 300 A

TWO SIZES

The standard Q-MC 125 (In up to 125 A) and Q-MC 200 high capacity (In up to 300 A) versions are the ideal solution for all applications in harbours on fixed piers, campsites and urban areas in general.

FIRE PREVENTION

Both are available in the fire prevention version, equipped with fire-hose and ready to be installed.



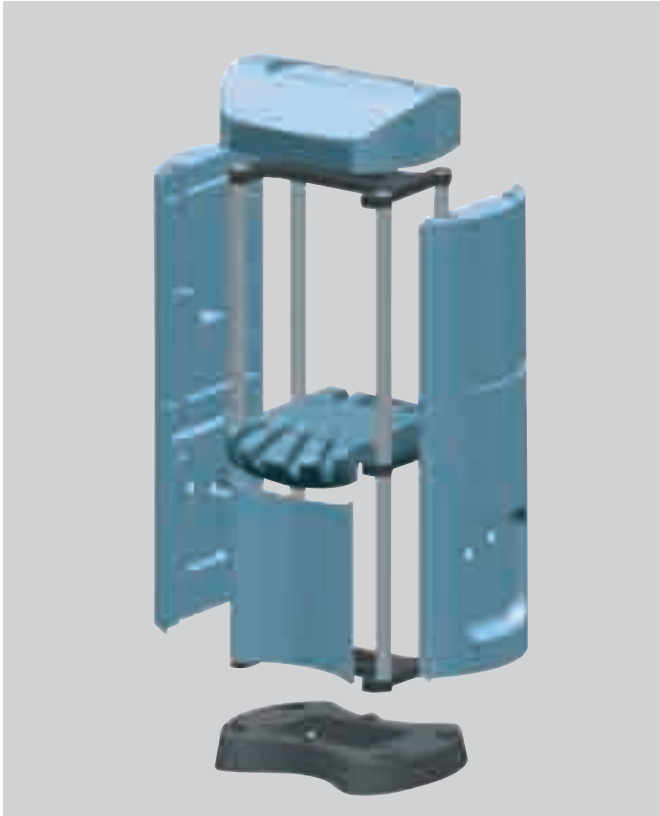
FLEXIBILITY

Six different flanged panels can house combinations of IEC 309 sockets from 16 A up to 125 A. It is also possible to fix other devices to the blank panel such as emergency push-buttons, telephone diallers, badge readers, information monitors, etc.

PROTECTION

The total synergy with 90 Range modular devices allows a better use of available space: the small size of the new MTC and MDC residual current devices and compact residual current circuit breakers allows the creation of countless combinations of switches, as well as modular accessories, for system control, protection and management.

CHARACTERISTICS AND ADVANTAGES



STRENGTH AND STABILITY

The internal structure is made of 4 tubular sections in aluminium which ensure maximum resistance also in critical conditions, such as accidental impacts or the effects of wind and sea. Stability on the ground is ensured by special stainless steel flanges, integral with the internal tubular structure; fixing to the ground occurs either by normal plugs or by specially dedicated stainless steel plates which are ideal with laying of concrete.



CABLE OUTLET

WITH TUG-PROOF CABLE CLAMPS
Practical and safe user connection.



CUSTOMISABLE SPACE AND OBJECT COMPARTMENT

In order to allow maximum customisation large side spaces have been created to house identification labelling, information, logos with a special protection in Plexiglas. On the top of the end cover there is a handy object holder.

MULTIFUNCTIONALITY

Beside supply of electrical energy it is possible, with the 27 range watertight covers, to install System Range connectors to distribute television, telephone and data signals.

LIGHTING COMPONENT WITH PROTECTION GRID

It can be fixed as an accessory on both sides of the terminal, it allows both identification of the column and correct lighting of the socket/protection device area.
Available in double version, with ordinary or emergency lighting.



COMPARTMENT ARRANGED FOR DISTRIBUTION OF TECHNICAL SERVICES

It allows installation of pipes for water and compressed air distribution. In order to ensure maximum safety it is physically separated from the compartment for electrical connections.



BLANK FOLDDAWAY DOOR

WITH SECURITY KEY

The innovative and exclusive door closing system means the door can be hidden inside the end cover, thus eliminating any risk of impacts and allowing maximum access to the equipment. It can be equipped with security lock.

68 Q-MC RANGE

ENERGY AND SERVICES DISTRIBUTION TERMINAL SYSTEM

GEWISS

CHARACTERISTICS AND ADVANTAGES

68 Q-MC RANGE

COMPACT HIGH CAPACITY TERMINALS WITH ELECTRONIC MANAGEMENT

Due to the new electronic management system, the compact (Q-MC 63 E) and high capacity version terminals (Q-MC 200 E) can be used both in "Stand Alone" prepaid operation and in centralised operation.

PREPAID AND CENTRALISED



CHARACTERISTICS AND ADVANTAGES

PREPAID

SYSTEM FUNCTIONALITY

The user accessed services supplied from the terminal by means of a "key" with transponder technology containing the user's identification data and available credit. Initialisation of the contents of the key and any credit top-up operations are performed through a dedicated device connected to a normal PC. All you have to do is to put the key near the terminal reading area to access the various services: activation of one power socket-outlet, activation of a water outlet, activation of a power socket and water outlet pair. The user can either use water and/or energy until the available credit runs out or until deactivation of service, to be carried out always by transponder key.



A SIMPLE AND COMPLETE SYSTEM

Allowing calculation of the power and water consumption of terminals in harbours, campsites and urban areas, with a wide range of configuration and customisation choices.



EASY TO USE

The user is guided through the whole operation by clear instructions which are displayed and confirmed by an acoustic signal.

EASY INSTALLATION

The electronic management system does not require any dedicated connection you only have to carry out the electrical connection to the end cover terminal block.

CENTRALISED

COMPLETE CONTROL

The supply of energy and water is constantly monitored by the system in order to solve immediately any technical problem such as tripping of the thermal protection, exceeding water supply threshold, etc.



CENTRALISED SYSTEM FUNCTIONALITY

By connecting the various installation terminals through data bus to the GW 68 773 PC card, it is possible to carry out remote activation and disactivation of energy and water supply, maintain monitoring of users of all terminals and account for consumption of each user.

