



# TD32

## Recessed Downlight

Utilizing the most advanced power LEDs from worldwide renowned companies, Ledion Lighting TD32 downlight integrates electrical, optical, and thermal management aspects of LEDs, while at the same time remain slim and compact in size.

TD32 is built specifically to model under limited space where traditional lighting fixtures are too large to fit in.

- Solid State Lighting Technology
- Decrease Energy Consumption
- Reduce CO<sub>2</sub> Emission
- Superior Quality Light
- Ecologically Friendly
- IP44 standard (IP55 available)
- 2 Year Limited Warranty

## Table of Contents

- Dimensions..... 2
- Specifications..... 2
- Illuminance and Field Angles..... 3
- Light Patterns..... 4
- Power..... 4
- Application Notes..... 4

## Dimensions

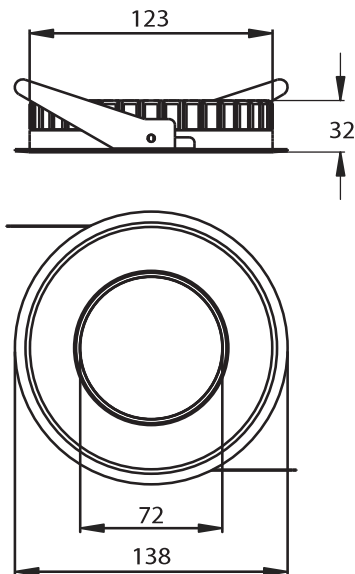
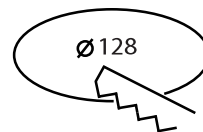


Figure 1: TD32 Recessed Downlight dimensions

Unit: mm  
Tolerance: ±2.5 mm



## Specifications

TD26 Recessed Downlight	
Power Consumption	15 Watt
Field Angle	25° / 40° / 60° / 140°
Color Temperature	3000 / 4000 / 6000K
CRI	≥ 70
Surface Temperature(Ta=25°C)	56°C
Weight	390 g
Driver	700mA / 17W

Table 1: TD32 Recessed Downlight specifications

## Illuminance and Field Angles

• Cool White / Neutral White / Warm White

Part Number	Power Consumption(W)	Field Angle	Lux*@ 1m (Typ.)	Flux(Typ.)	CCT(Typ.)
LR-TD32-152100	15W	25°	5500	--	6000K
LR-TD32-152200			4000	--	4000K
LR-TD32-152300			3600	--	3000K
LR-TD32-154100		40°	3000	--	6000K
LR-TD32-154200			2500	--	4000K
LR-TD32-154300			2300	--	3000K
LR-TD32-156100		60°	600	--	6000k
LR-TD32-156200			470	--	4000K
LR-TD32-156300			420	--	3000K
LR-TD32-150100		140°	--	600 lm	6000K
LR-TD32-150200			--	500 lm	4000K
LR-TD32-150300			--	400 lm	3000K

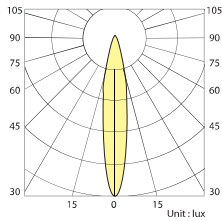
Table 2: TD32 Recessed Downlight illuminance and field angles

Notes:

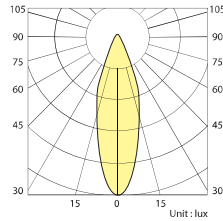
1. Lux value is measured under thermal balanced condition. (i.e. after 1 hour continuous operation)
2. LED is a dynamic and constantly evolving technology. The final lux output of your TD32 Recessed Downlight may vary.
3. Input voltage = AC 100~250V

## Light Patterns

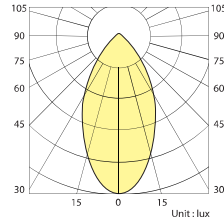
• 25°



• 40°



• 60°



• 140°

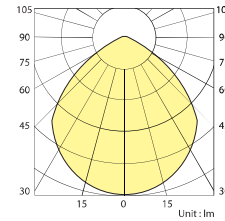


Figure 2: TD32 Recessed Downlight light patterns for different angles

## Assembly Instructions and Recommended Driver Specification

Input Voltage	Output Voltage	Operating Current (Constant)	Rated Power
AC 100~250V	DC 18~24V	700mA	>15W

Table 3: Specification of recommended driver

- Assembly instructions
1. Connect the 15W TD32 to the DC driver shown as step 1.
  2. Plug the driver to AC outlet shown as step 1.

**Caution:** Never plug the driver to AC outlet before the 15W TD32 is properly connected as this damage the LEDs permanently

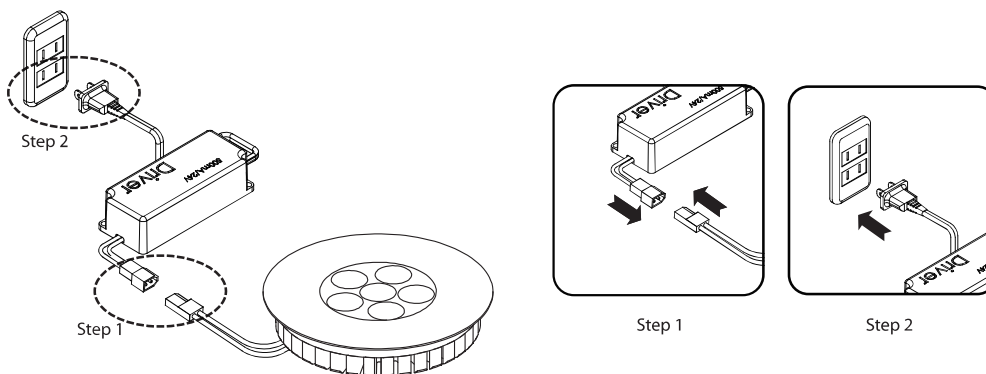


Figure 3: Assembly Instructions