

# Z<sub>nt</sub>

## FLUORESCENT AND COMPACT

Watertight luminaire with very thick polycarbonate casing and transparent polycarbonate diffusor stabilized in U.V. rays.

Self-extinguishing rating 850°, impact resistance higher than 20 J. So as to ensure total protection, also against vandalism, the luminaire is equipped with stainless steel clips that can be operated only with tool.

The range has been revamped with 55 W and 80 W compact fluorescent versions with electronic supply power. Double insulation and emergency versions finish off the range. The luminaires are supplied with special KITS containing components for fixing to the ceiling, suspension on conduit and on tiges.



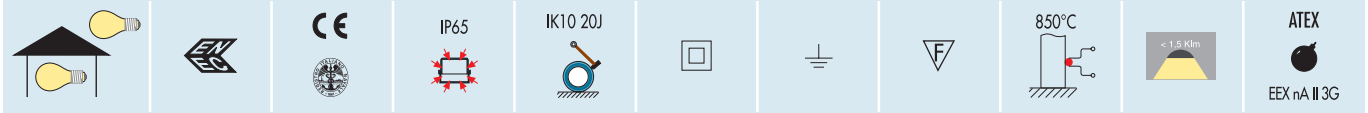
**NEW VERSIONS FOR 55 W AND 80 W  
FLUORESCENT AND COMPACT LAMPS WITH  
EXTREMELY LOW LOSS ELECTRONIC SUPPLY  
POWER**

# ZNT RANGE

WATERTIGHT POLYCARBONATE CEILING-MOUNTING LUMINAIRES

**GEWISS**

## CHARACTERISTICS AND ADVANTAGES

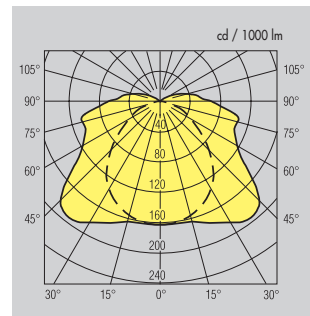


### A LOWER NUMBER OF PRODUCTS INSTALLED RELATIVE TO THE LIGHTING OUTPUT OBTAINED



#### ◀ ZNT: SAVINGS THROUGH QUALITY

A special lenticular prism system has been adopted on the internal surface of the transparent polycarbonate shield in order to get better distribution of the emitted light. ZNT's superior performance allows you to install a lower number of luminaires compared to the leading competitors, with a consequent savings in system management costs.



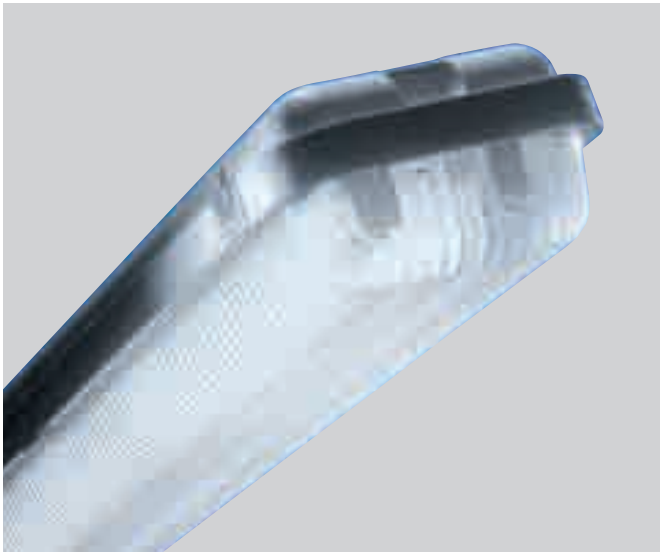
#### DIRECT COMPARISON WITH THE 7 MAJOR COMPETITORS IN AN INSTALLATION OF THE TYPE

Industrial shed 25 x 50 m, height 7 m  
 Luminaire installation height: 6.5m  
 required lighting at ground level: 250 Lux  
 Standard reflection coeff.: walls/ceiling 0.7 - floor 0.4

	ZNTGW 80 006 2 X 58 W	BEST COMPETITOR 2 X 58 W	WORST COMPETITOR 2 X 58 W
AVERAGE LUX AT THE GROUND	250 Lux	250 Lux	250 Lux
N° LUMINAIRES REQUIRED	55	60	65
	-	+ 9%	+ 18%
INSTALLATION KW (142 W per luminaire)	7.8	8.5	9.2
ANNUAL CONSUMPTION KWh (8 h a day x 250 days a year)	15.620/h	17.040/h	18.460/h
ANNUAL COST (0.15 € per KWh)	2.343 €	2.556 €	2.769 €
	-	+ 213 €	+ 426 €

ZNT RANGE

### WATERTIGHT LUMINAIRES - ATEX VERSION



#### ◀ ZNT FOR ATEX ENVIRONMENTS - EEX nA II3G T4

Watertight luminaire designed and tested for use in environments with the presence of potentially explosives gases. Non-sparking electronic components, stainless steel closure rings operable only with the appropriate tools. These luminaires can be installed in class 2 environments, in other words, in rooms with a low probability of the presence of explosive gases under normal working conditions.

- EEX nA = electric structure that does not produce sparks
- II = electric structure for rooms with a potentially explosive atmosphere, different from mines with the presence of coal gas
- 3 = category 3 unit
- G = protection against Gas ignition
- T4 = maximum surface temperature of the unit

### IMPROVED OUTPUT AND LONGER DURATION WITH THE NEW ELECTRONIC POWER SUPPLY FLUORESCENT VERSIONS



#### ▲ EFFICIENCY

The new fluorescent sources used in the ZNT series watertight industrial luminaires provide a light flux that is comparable to that available using metal iodide lamps. In the case of the 4x55W versions, the flux produced is 19.200 Lm and therefore equivalent to that of an industrial reflector with a 250W metal iodide lamp.

VERSION	CODE	FLUX	AVERAGE LIFETIME	METAL IODIDE EQUIVALENCY
1 x 55 W	GW 80 191	4800	16000h	70 W
2 x 55 W	GW 80 192	9600		100 W
2 x 55 W	GW 80 193	9600		100 W
2 x 80 W	GW 80 194	12000		150 W
4 x 55 W	GW 80 195	19200		250 W

#### ▲ DURATION

The compact fluorescent sources guarantee an average lifetime of 16.000 hours which is almost double that of iodide discharge sources.

#### EFFICIENCY OVER TIME

The shield is prismatic internally and is made of self-extinguishing polycarbonate stabilized to U.V. rays. The internal prism system makes cleaning and maintenance of the luminaire light efficiency easier over time.



#### ◀ 20 J

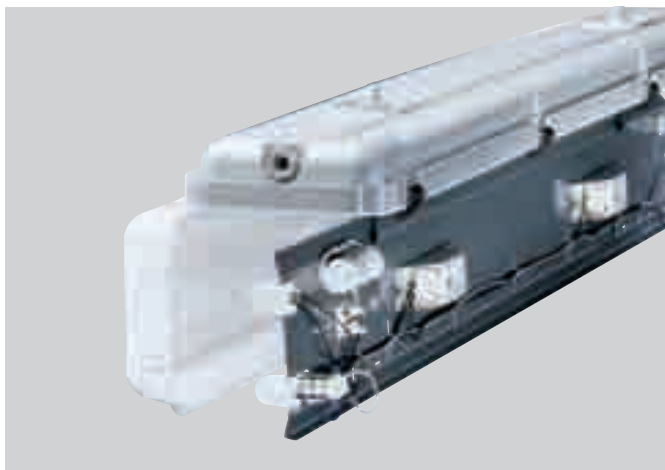
The materials used and the thickness of the casing and diffuser make the luminaire the sturdiest on the market, with an impact resistance double that of normal tempered glass.

# ZNT RANGE

WATERTIGHT POLYCARBONATE CEILING-MOUNTING LUMINAIRES



## CHARACTERISTICS AND ADVANTAGES



### RESTRICTED BEAM REFLECTOR

In specular aluminium 99.85 polished and anodized, available as an accessory.



### MAINTENANCE MADE EASY

The shield retaining system using cable ties both in the single-lamp and double-lamp versions makes maintenance operations easier to perform.

ZNT RANGE

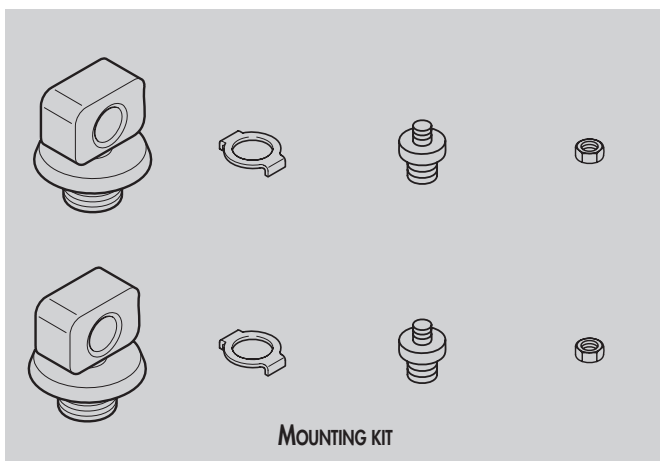
### VERSATILE USE

The luminaires are designed for ceiling-mounting with tiges or by suspension on a busbar or conduit. All luminaires are supplied with a mounting KIT.



### PROTECTION

The stainless steel closing clips of the diffuser can be opened only with a tool so a high degree of vandal-proof protection is ensured.



MOUNTING KIT

