

Floodlight luminaire 230 V

Shape and Type of lamp		Fluorescent (W)							Halogen (W)			Discharge lamps						
												35W	70W					
	ME ellipse metal halides																	
	MT tubular metal halides												35	70				
	MD double connection metal halides														70			
	MN metal halides with cable																	
	SE ellipse high pressure sodium																	
	ST tubular high pressure sodium														70			
	SD double connection high pressure sodium															70		
	QE mercury vapour																	
	Fluorescent	2x18	4x18	1x32	2x32	1x42	2x42	1x120W 3000°k	1x120W 4000°k									
	HS double-spined halogen									50	75	100						
	HD double connection halogen											500	1000	1500				
Symmetrical optics	Genius 	Graphite grey																
		White																
		Graphite grey infrared sensors																
		White infrared sensors																
		On the graphite grey tubular support																
		On the white tubular support																
Symmetrical optics	Mercutio 	Graphite grey																
		Aluminium																
		Horus 1 diffused optics	GW 85 306		GW 85 367		GW 85 366											
		Horus 2 diffused optics		GW 85 016		GW 85 067		GW 85 066										
		Horus 3 diffused optics							GW 85 109F	GW 85 110F								
		Horus 3 restricted beam optics																
Symmetrical optics	Horus 	Horus 3 road optics																
		Titano 	Titano diffused optics															
		Titano restricted beam optics																
		Colosseum 	Colosseum diffused optics															
		Colosseum restricted beam optics																
		Stadium 	Stadium diffused optics															
Asymmetrical optics	Mercutio 	Stadium restricted beam optics																
		Graphite grey																
		Aluminium																
		Urano 	Urano graphite grey															
		Urano aluminium																
		Urano white																
Asymmetrical optics	Horus 	Horus 1 diffused optics																
		Horus 2 diffused optics																
		Horus 3 diffused optics																
		Horus 3 restricted beam optics																
		Titano 	Titano diffused optics															
		Titano restricted beam optics																
Circular beam	Colosseum 	Colosseum diffused optics																
		Colosseum restricted beam optics																
		Dedalo 	Adjustable beam 6°-30°															
		Graphite grey																
		Aluminium																
		Horus 	Circular optics 8°															
Special optics	Colosseum 	Restricted beam optics 8°																
		Semi restricted beam optics 25°																
		Diffused optics 40°																
		Hot restrike restricted beam optics 8°																
		Hot-restrike semi restricted beam optics 25°																
		Hot-restrike diffused optics 40°																

* Lamp with 0.7 ÷ 1 kV striking voltage.

TITANO RANGE

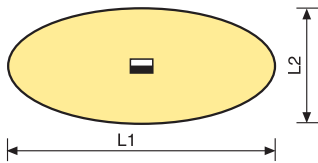
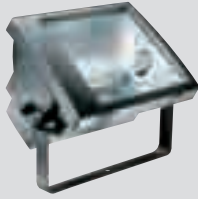
SYMMETRICAL AND ASYMMETRICAL MEDIUM-POWER FLOODLIGHTS



SELECTION GUIDE

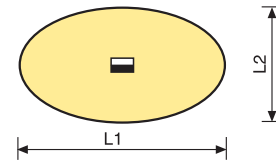
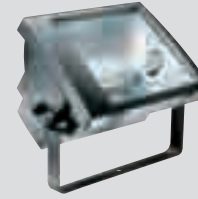
TITANO RANGE

250W MT DIFFUSED SYMMETRICAL OPTICS



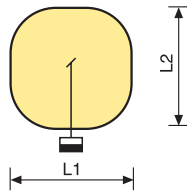
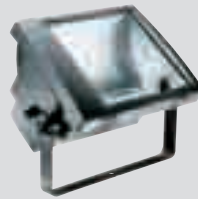
installation height	L1xL2	E max	E med.	UNIFORMITY
8 m	10x4	165	111	0.65
10m	12.5x5	107	67	0.63
12m	15x7	74	48	0.64

400W MT DIFFUSED SYMMETRICAL OPTICS



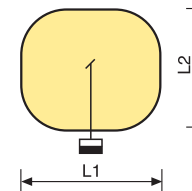
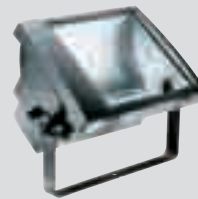
installation height	L1xL2	E max	E med.	UNIFORMITY
8 m	10x5	255	171	0.67
10m	13x7	165	103	0.63
12m	15x8	115	74	0.65

250W MT DIFFUSED ASYMMETRICAL OPTICS



installation height	L1xL2	d	E max	E med.	UNIFORMITY
8 m	11.5x11.5	5m	80	52	0.61
10m	15x14	5.5m	50	32	0.61
12m	17x17	6m	36	22	0.61

400W MT DIFFUSED ASYMMETRICAL OPTICS



installation height	L1xL2	d	E max	E med.	UNIFORMITY
8 m	10x8	4.5m	136	97	0.72
10m	14x13	5.5m	88	55	0.62
12m	17x14	6m	61	39	0.63

TITANO RANGE

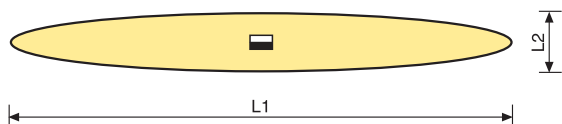
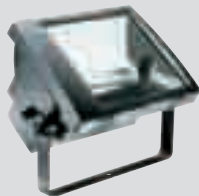
SYMMETRICAL AND ASYMMETRICAL MEDIUM-POWER FLOODLIGHTS



SELECTION GUIDE

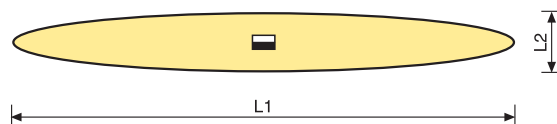
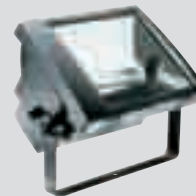
TITANO RANGE

250W MT RESTRICTED BEAM SYMMETRICAL OPTICS



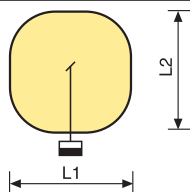
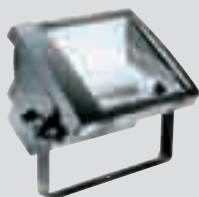
installation height	L1xL2	E max	E med.	UNIFORMITY
8 m	11x1	421	321	0.79
10m	14x1.5	294	176	0.6
12m	16.5x2	216	138	0.64

400W MT RESTRICTED BEAM SYMMETRICAL OPTICS



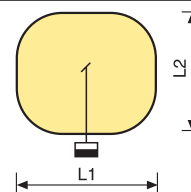
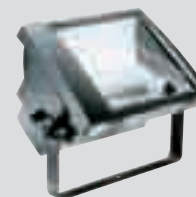
installation height	L1xL2	E max	E med.	UNIFORMITY
8 m	11x1	617	365	0.59
10m	14x1.5	423	265	0.63
12m	16.5x2	310	201	0.65

250W MT RESTRICTED BEAM ASYMMETRICAL OPTICS



installation height	L1xL2	d	E max	E med.	UNIFORMITY
8 m	12x12	4m	84	47	0.56
10m	15x13	4.5m	53	32	0.6
12m	17x16	5m	38	23	0.61

400W MT RESTRICTED BEAM ASYMMETRICAL OPTICS



installation height	L1xL2	d	E max	E med.	UNIFORMITY
8 m	13x11	4.5m	133	78	0.58
10m	16x13	5m	88	50	0.57
12m	19x15.5	5.5m	61	36	0.59