

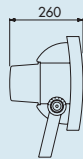
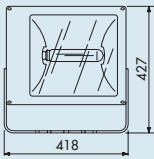
TITANO RANGE

SYMMETRICAL AND ASYMMETRICAL MEDIUM-POWER FLOODLIGHTS



TITANO RANGE

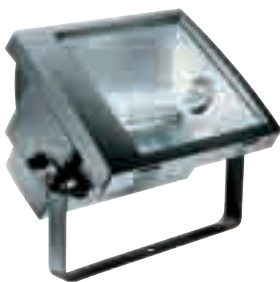
STANDARD VERSION



SYMMETRICAL DIFFUSED OPTICS

WIRED VERSIONS WITH P.F. CORRECTION COMPLETE WITH LAMP - IP66 - CLASS I

GW84460S

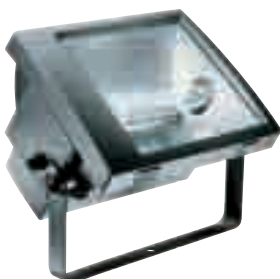


Code	Lamp power	Lamp supplied	Lamp holder	Lamp current	Colour	Weight (Kg)	Pack Carton
VOLTAGE: 230 V - 50 Hz							
GW 84 460 S	150 W	ST	E40	1.8 A	Graphite grey	9.3	1
GW 84 461 S	250 W	ST	E40	3 A	Graphite grey	9.8	1
GW 84 461 M	250 W	MT	E40	3 A	Graphite grey	9.8	1
GW 84 465 M	250 W	MT*	E40	2.2 A	Graphite grey	9.5	1
GW 84 462 Q	250 W	QE	E40	2.2 A	Graphite grey	9.2	1
GW 84 464 S	400 W	ST	E40	4.2 A	Graphite grey	11.3	1
GW 84 464 M	400 W	MT	E40	4.2 A	Graphite grey	11.3	1
GW 84 466 M	400 W	MT*	E40	3.4 A	Graphite grey	11	1
VOLTAGE: 240 V - 50 Hz							
GW 84 470 S	150 W	ST	E40	1.8 A	Graphite grey	9.3	1
GW 84 471 S	250 W	ST	E40	3 A	Graphite grey	9.8	1
GW 84 471 M	250 W	MT	E40	3 A	Graphite grey	9.8	1
GW 84 475 M	250 W	MT*	E40	2.2 A	Graphite grey	9.5	1
GW 84 472 Q	250 W	QE	E40	2.2 A	Graphite grey	9.2	1
GW 84 474 S	400 W	ST	E40	4.2 A	Graphite grey	11.3	1
GW 84 474 M	400 W	MT	E40	4.2 A	Graphite grey	11.3	1
GW 84 476 M	400 W	MT*	E40	3.4 A	Graphite grey	11	1
VOLTAGE: 220 V - 60 Hz							
GW 84 480 S	150 W	ST	E40	1.8 A	Graphite grey	9.3	1
GW 84 481 S	250 W	ST	E40	3 A	Graphite grey	9.8	1
GW 84 481 M	250 W	MT	E40	3 A	Graphite grey	9.8	1
GW 84 485 M	250 W	MT*	E40	2.2 A	Graphite grey	9.5	1
GW 84 482 Q	250 W	QE	E40	2.2 A	Graphite grey	9.2	1
GW 84 484 S	400 W	ST	E40	4.2 A	Graphite grey	11.3	1
GW 84 484 M	400 W	MT	E40	4.2 A	Graphite grey	11.3	1
GW 84 486 M	400 W	MT*	E40	3.4 A	Graphite grey	11	1

* Lamp with 0,7 ÷ 1KV striking voltage.

NON-WIRED VERSION

GW84433

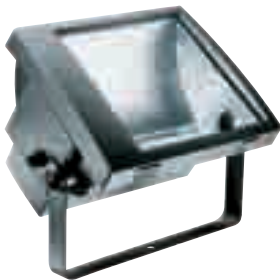


Code	Max. lamp power	Lamp type	Lamp holder	Lamp current	Colour	Weight (Kg)	Pack Carton
GW 84 433	400 W	-	E40		Graphite grey	6.8	1

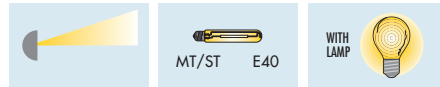
ACCESSORIES SUPPLIED: structural components: reflector, accessory-holding plate. Electrical components: lampholder with cables, supply terminal. The device is supplied with standard service items.

ASYMMETRICAL DIFFUSED OPTICS

GW84491S



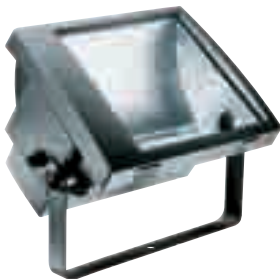
WIRED VERSIONS WITH P.F. CORRECTION COMPLETE WITH LAMP - IP66 - CLASS I



Code	Lamp power	Lamp supplied	Lamp holder	Lamp current	Colour	Weight (Kg)	Pack Carton
VOLTAGE: 230 V - 50 Hz							
GW 84 491 S	250 W	ST	E40	3 A	Graphite grey	9.8	1
GW 84 491 M	250 W	MT	E40	3 A	Graphite grey	9.8	1
GW 84 495 M	250 W	MT*	E40	2.2 A	Graphite grey	9.5	1
GW 84 494 S	400 W	ST	E40	4.2 A	Graphite grey	11.3	1
GW 84 494 M	400 W	MT	E40	4.2 A	Graphite grey	11.3	1
GW 84 496 M	400 W	MT*	E40	3.4 A	Graphite grey	11	1
VOLTAGE: 240 V - 50 Hz							
GW 84 501 S	250 W	ST	E40	3 A	Graphite grey	9.8	1
GW 84 501 M	250 W	MT	E40	3 A	Graphite grey	9.8	1
GW 84 505 M	250 W	MT*	E40	2.2 A	Graphite grey	9.5	1
GW 84 504 S	400 W	ST	E40	4.2 A	Graphite grey	11.3	1
GW 84 504 M	400 W	MT	E40	4.2 A	Graphite grey	11.3	1
GW 84 506 M	400 W	MT*	E40	3.4 A	Graphite grey	11	1
VOLTAGE: 220 V - 60 Hz							
GW 84 511 S	250 W	ST	E40	3 A	Graphite grey	9.8	1
GW 84 511 M	250 W	MT	E40	3 A	Graphite grey	9.8	1
GW 84 515 M	250 W	MT*	E40	2.2 A	Graphite grey	9.5	1
GW 84 514 S	400 W	ST	E40	4.2 A	Graphite grey	11.3	1
GW 84 514 M	400 W	MT	E40	4.2 A	Graphite grey	11.3	1
GW 84 516 M	400 W	MT*	E40	3.4 A	Graphite grey	11	1

* Lamp with 0,7 ÷ 1KV striking voltage.

GW84434



NON-WIRED VERSION



Code	Max. lamp power	Lamp type	Lamp holder	Lamp current	Colour	Weight (Kg)	Pack Carton
GW 84 434	400 W	-	E40		Graphite grey	6.8	1

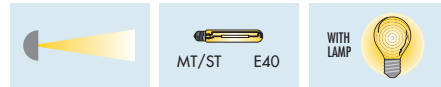
ACCESSORIES SUPPLIED: structural components: reflector, accessory-holding plate. Electrical components: lampholder with cables, supply terminal. The device is supplied with standard service items.

SYMMETRICAL RESTRICTED BEAM OPTICS

GW84520S



WIRED VERSIONS WITH P.F. CORRECTION COMPLETE WITH LAMP - IP66 - CLASS I



Code	Lamp power	Lamp supplied	Lamp holder	Lamp current	Colour	Weight (Kg)	Pack Carton
VOLTAGE: 230 V - 50 Hz							
GW 84 520 S	250 W	ST	E40	3 A	Graphite grey	9.8	1
GW 84 520 M	250 W	MT	E40	3 A	Graphite grey	9.8	1
GW 84 521 M	250 W	MT*	E40	2.2 A	Graphite grey	9.5	1
GW 84 522 S	400 W	ST	E40	4.2 A	Graphite grey	11.3	1
GW 84 522 M	400 W	MT	E40	4.2 A	Graphite grey	11.3	1
GW 84 523 M	400 W	MT*	E40	3.4 A	Graphite grey	11	1
VOLTAGE: 240 V - 50 Hz							
GW 84 530 S	250 W	ST	E40	3 A	Graphite grey	9.8	1
GW 84 530 M	250 W	MT	E40	3 A	Graphite grey	9.8	1
GW 84 531 M	250 W	MT*	E40	2.2 A	Graphite grey	9.5	1
GW 84 532 S	400 W	ST	E40	4.2 A	Graphite grey	11.3	1
GW 84 532 M	400 W	MT	E40	4.2 A	Graphite grey	11.3	1
GW 84 533 M	400 W	MT*	E40	3.4 A	Graphite grey	11	1
VOLTAGE: 220 V - 60 Hz							
GW 84 540 S	250 W	ST	E40	3 A	Graphite grey	9.8	1
GW 84 540 M	250 W	MT	E40	3 A	Graphite grey	9.8	1
GW 84 541 M	250 W	MT*	E40	2.2 A	Graphite grey	9.5	1
GW 84 542 S	400 W	ST	E40	4.2 A	Graphite grey	11.3	1
GW 84 542 M	400 W	MT	E40	4.2 A	Graphite grey	11.3	1
GW 84 543 M	400 W	MT*	E40	3.4 A	Graphite grey	11	1

* Lamp with 0,7 ÷ 1KV striking voltage.

NON-WIRED VERSION

GW84435

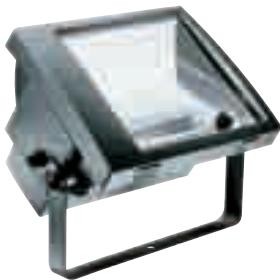


Code	Max. lamp power	Lamp type	Lamp holder	Lamp current	Colour	Weight (Kg)	Pack Carton
GW 84 435	400 W	-	E40		Graphite grey	6.8	1

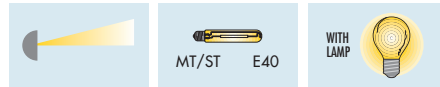
ACCESSORIES SUPPLIED: structural components: reflector, accessory-holding plate. Electrical components: lampholder with cables, supply terminal. The device is supplied with standard service items.

ASYMMETRICAL RESTRICTED BEAM OPTICS

GW84551S



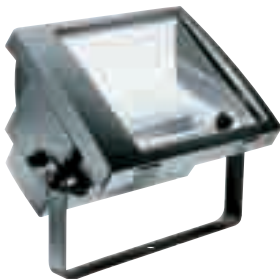
WIRED VERSIONS WITH P.F. CORRECTION COMPLETE WITH LAMP - IP66 - CLASS I



Code	Lamp power	Lamp supplied	Lamp holder	Lamp current	Colour	Weight (Kg)	Pack Carton
VOLTAGE: 230 V - 50 Hz							
GW 84 551 S	250 W	ST	E40	3 A	Graphite grey	9.8	1
GW 84 551 M	250 W	MT	E40	3 A	Graphite grey	9.8	1
GW 84 552 M	250 W	MT*	E40	2.2 A	Graphite grey	9.5	1
GW 84 553 S	400 W	ST	E40	4.2 A	Graphite grey	11.3	1
GW 84 553 M	400 W	MT	E40	4.2 A	Graphite grey	11.3	1
GW 84 554 M	400 W	MT*	E40	3.4 A	Graphite grey	11	1
VOLTAGE: 240 V - 50 Hz							
GW 84 561 S	250 W	ST	E40	3 A	Graphite grey	9.8	1
GW 84 561 M	250 W	MT	E40	3 A	Graphite grey	9.8	1
GW 84 562 M	250 W	MT*	E40	2.2 A	Graphite grey	9.5	1
GW 84 563 S	400 W	ST	E40	4.2 A	Graphite grey	11.3	1
GW 84 563 M	400 W	MT	E40	4.2 A	Graphite grey	11.3	1
GW 84 564 M	400 W	MT*	E40	3.4 A	Graphite grey	11	1
VOLTAGE: 220 V - 60 Hz							
GW 84 571 S	250 W	ST	E40	3 A	Graphite grey	9.8	1
GW 84 571 M	250 W	ST	E40	3 A	Graphite grey	9.8	1
GW 84 572 M	250 W	MT*	E40	2.2 A	Graphite grey	9.5	1
GW 84 573 S	400 W	ST	E40	4.2 A	Graphite grey	11.3	1
GW 84 573 M	400 W	MT	E40	4.2 A	Graphite grey	11.3	1
GW 84 574 M	400 W	MT*	E40	3.4 A	Graphite grey	11	1

* Lamp with 0,7 ÷ 1KV striking voltage.

GW84436



NON-WIRED VERSION



Code	Max. lamp power	Lamp type	Lamp holder	Lamp current	Colour	Weight (Kg)	Pack Carton
GW 84 436	400 W	-	E40		Graphite grey	6.8	1

ACCESSORIES SUPPLIED: structural components: reflector, accessory-holding plate. Electrical components: lampholder with cables, supply terminal. The device is supplied with standard service items.

TITANO RANGE

SYMMETRICAL AND ASYMMETRICAL MEDIUM-POWER FLOODLIGHTS



TITANO RANGE

ATEX VERSION - ZONE 2 (G) - ZONE 22 (D)

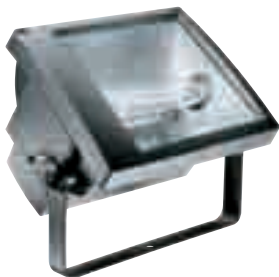
ATEX



SYMMETRICAL DIFFUSED OPTICS

WIRED VERSIONS WITH P.F. CORRECTION COMPLETE WITH LAMP - IP66 - CLASS I

GW84581S



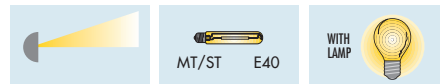
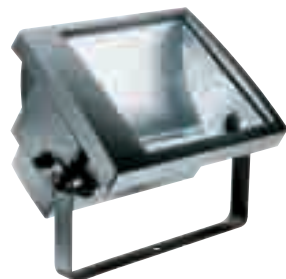
Code	Lamp power	Lamp supplied	Lamp holder	Lamp current	Colour	Weight (Kg)	Pack Carton
VOLTAGE: 230 V - 50 Hz							
GW 84 581 S	250 W	ST	E40	3 A	Graphite grey	9.8	1
GW 84 581 M	250 W	MT	E40	3 A	Graphite grey	9.8	1
GW 84 582 M	250 W	MT*	E40	2.2 A	Graphite grey	9.5	1
GW 84 583 S	400 W	ST	E40	4.2 A	Graphite grey	11.3	1
GW 84 583 M	400 W	MT	E40	4.2 A	Graphite grey	11.3	1
GW 84 584 M	400 W	MT*	E40	3.4 A	Graphite grey	11	1

* Lamp with 0,7 ÷ 1KV striking voltage.

ASYMMETRICAL DIFFUSED OPTICS

WIRED VERSIONS WITH P.F. CORRECTION COMPLETE WITH LAMP - IP66 - CLASS I

GW84591S



Code	Lamp power	Lamp supplied	Lamp holder	Lamp current	Colour	Weight (Kg)	Pack Carton
VOLTAGE: 230 V - 50 Hz							
GW 84 591 S	250 W	ST	E40	3 A	Graphite grey	9.8	1
GW 84 591 M	250 W	MT	E40	3 A	Graphite grey	9.8	1
GW 84 592 M	250 W	MT*	E40	2.2 A	Graphite grey	9.5	1
GW 84 593 S	400 W	ST	E40	4.2 A	Graphite grey	11.3	1
GW 84 593 M	400 W	MT	E40	4.2 A	Graphite grey	11.3	1
GW 84 594 M	400 W	MT*	E40	3.4 A	Graphite grey	11	1

NEW

COMPLEMENTARY ITEMS



COMPLEMENTARY ITEMS FOR INSTALLATION

SPARE PARTS

Code	Description	Type	Dimension (mm)	Weight (Kg)	Pack Carton
GW 84 407	Protective wire guard		310x270	0.2	5
GW 84 408	Anti-glare louvre		300x270	0.7	5
GW 88 284	Glass for frame	With slots or hooks	390x306	1.4	1/5
GW 88 260	Glass for frame	Without slots	390x300	1.4	1/5

CHARACTERISTICS: suitable for all TITANO range devices. Clip fixing.