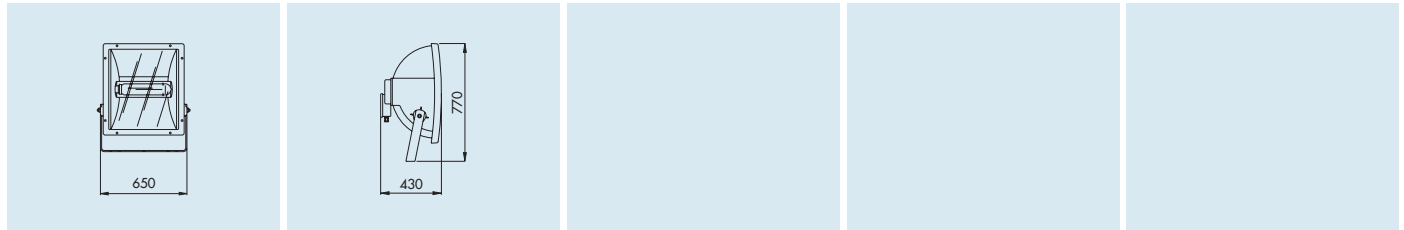


STADIUM RANGE

SYMMETRICAL FLOODLIGHTS FOR LARGE-SCALE SYSTEMS

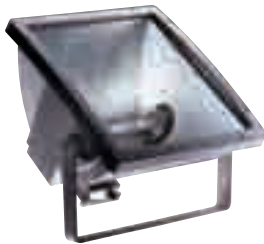


STADIUM RANGE



SYMMETRICAL DIFFUSED OPTICS

GW84662



WIRED VERSIONS - IP66 - CLASS I

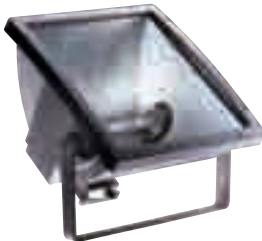


| Code | Lamp power | Lamp type | Lamp holder | Lamp current | Colour | Weight (Kg) | Pack Carton |
|-----------|------------|-----------|-------------|--------------|---------------|-------------|-------------|
| GW 84 662 | 1000 W | ST | E40 | 10.3 A | Graphite grey | 22 | 1 |
| GW 84 663 | 2000 W | MT* | E40 | 10.3 A | Graphite grey | 22 | 1 |

* Supplied without ignitor for 380/400V lamp.
ACCESSORIED SUPPLIED: GW84662, ignitor.
NOTE: to be used with the relative supply unit.

ASYMMETRICAL DIFFUSED OPTICS

GW84667



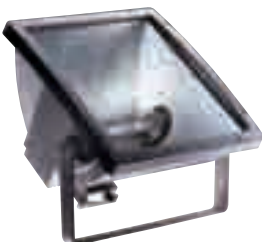
WIRED VERSIONS - IP66 - CLASS I



| Code | Lamp power | Lamp type | Lamp holder | Lamp current | Colour | Weight (Kg) | Pack Carton |
|-----------|------------|-----------|-------------|--------------|---------------|-------------|-------------|
| GW 84 667 | 1000 W | MN | X528/CABLE | 9.5 - 10.3 A | Graphite grey | 22 | 1 |
| GW 84 668 | 2000 W | MN | X528/CABLE | 9.8 A | Graphite grey | 22 | 1 |

SYMMETRICAL RESTRICTED BEAM OPTICS

GW84672



WIRED VERSIONS - IP66 - CLASS I



| Code | Lamp power | Lamp type | Lamp holder | Lamp current | Colour | Weight (Kg) | Pack Carton |
|-----------|------------|-----------|-------------|--------------|---------------|-------------|-------------|
| GW 84 672 | 1000 W | ST | E40 | 10.3 A | Graphite grey | 22 | 1 |
| GW 84 673 | 2000 W | MT* | E40 | 10.3 A | Graphite grey | 22 | 1 |

* Supplied without ignitor for 380/400V lamp.
ACCESSORIED SUPPLIED: GW84662, ignitor.
NOTE: to be used with the relative supply unit.

COMPLEMENTARY ITEMS

GW84616



SUPPLY UNITS - IP66 - CLASS I

| Code | Lamp power | Lamp type | Lamp current | Voltage | Weight (Kg) | Pack Carton |
|-----------|------------|---------------|--------------|---------------|-------------|-------------|
| GW 84 616 | 1000 W | MT/MN/ST | 9.5 - 10.3 A | 230 V - 50 Hz | 14.5 | 1 |
| GW 84 621 | 2000 W | MT/MN | 9.8 - 11.3 A | 400 V - 50 Hz | 18 | 1 |
| GW 84 626 | | Box not wired | | | 3.2 | 1 |

NOTE: the unwired box is supplied with supply unit support plate, cable clamp and cable gland Pg 13,5.

SPARE PARTS

| Code | Description | Dimension (mm) | Weight (Kg) | Pack Carton |
|-----------|-------------|----------------|-------------|-------------|
| GW 88 262 | Glass | 615x550 | 4.1 | 1/2 |

NEW