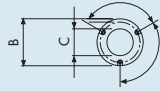
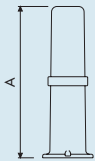


# POINT/PARK RANGE

GARDEN ILLUMINATION DEVICES



## POINT

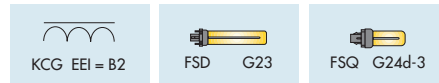


LAMP POWER	B	C	A
1 x 11W	137	90	447
1 x 26W	184	130	502

## CYLINDRICAL LUMINAIRES

### WIRED VERSIONS FOR FLUORESCENT LAMPS - IP55 - CLASS II

GW82006



Code	No. lamps	Lamp power	Lamp type	Lamp holder	Colour	Height (mm)	Pack Carton
<b>VOLTAGE: 230 V - 50 Hz</b>							
GW 82 006	1	11 W	FSD	G23	Graphite grey	447	1/2
GW 82 007	1	26 W	FSQ	G24d-3	Graphite grey	502	1/2

### NON-WIRED VERSIONS

GW82056



Code	No. lamps	Lamp power	Lamp type	Lamp holder	Colour	Height (mm)	Pack Carton
GW 82 056	1	11 W	FSD	G23	Graphite grey	447	1/4
GW 82 057	1	26 W	FSQ	G24d-3	Graphite grey	502	1/2

**ACCESSORIES SUPPLIED:** structural components: reflector, accessory-holding plate. Electrical items: lampholder with cables, supply terminal.  
The devices are supplied with standard service items.

POINT/PARK RANGE

NEW

# POINT/PARK RANGE

GARDEN ILLUMINATION DEVICES

**GEWISS**

## PARK

		<table border="1"> <thead> <tr> <th colspan="4">LAMP POWER</th> </tr> <tr> <th></th> <th>B</th> <th>P</th> <th>H</th> </tr> </thead> <tbody> <tr> <td>1 x 16W</td> <td>134</td> <td>170</td> <td>440</td> </tr> <tr> <td>1 x 28W</td> <td>152</td> <td>230</td> <td>570</td> </tr> </tbody> </table>	LAMP POWER					B	P	H	1 x 16W	134	170	440	1 x 28W	152	230	570		
LAMP POWER																				
	B	P	H																	
1 x 16W	134	170	440																	
1 x 28W	152	230	570																	

## RECTANGULAR DEVICES

### WIRED VERSIONS FOR FLUORESCENT LAMPS - IP55 - CLASS II

GW82008



<p>KCG EEI = B2</p>	<p>FSS GR8-2d</p>
---------------------	-------------------

Code	No. lamps	Lamp power	Lamp type	Lamp holder	Colour	Height (mm)	Pack Carton
<b>VOLTAGE: 230 V - 50 Hz</b>							
GW 82 008	1	16 W	FSS	GR8 2d	Graphite grey	440	1/4
GW 82 009	1	28 W	FSS	GR8 2d	Graphite grey	570	1/2

POINT/PARK RANGE

NEW