

# Mercurio

NEWS

## THE SEARCH FOR PERFECTION

The new family of floodlights with die-cast aluminium body of the MERCURIO range was developed to offer users a wide choice as far as type of optics, light sources and accessories are concerned in order to enable them to always find the optimal lighting design solution.

Reflector in 99.85 polished and anodised aluminium. Front opening with snap-on clips which can be fitted with anti-tampering screw. Immediate access to the power supply terminal.

All external nuts and bolts are made of stainless steel. Protection against corrosion is guaranteed by Alodine 1200 through chromate treatment and by the powder coating in graphite grey with metallic or silver effect.



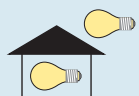
# MERCURIO RANGE

COMPACT ALUMINIUM FLOODLIGHTS FOR OUTSIDE AND INSIDE

**GEWISS**

## CHARACTERISTICS AND ADVANTAGES

MERCURIO RANGE



### ◀ EASY OPENING

The opening lever can be actioned without any tools so as to facilitate installation, wiring and maintenance operations.

The anti-tampering closure can be achieved, if necessary, by fitting a tap forming screw which blocks the clip once and for all.

The wiring compartment is also easily accessible once the front glass has been opened.

All electrical components are fitted on a metal support plate and are fully removable.

### ▶ INSTALLATION

The body's profile has been designed to enable it to be easily handled and manoeuvred in difficult areas where installation can be complicated.

MERCURIO is supplied packaged with a separate bracket, completed with pre-fitted, unloosable installation accessories.



### ▶ STAINLESS STEEL

All external screws are in stainless steel so that maximum quality over time can be guaranteed.

### ▶ PG SEAT

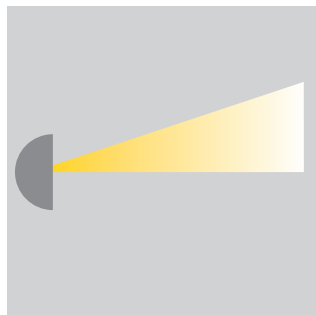
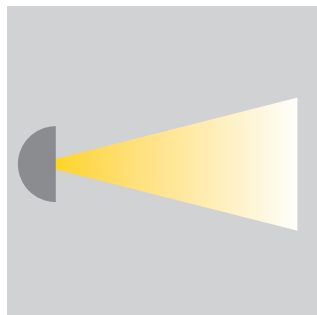
The profile of the PG seat has also been especially designed so as to allow it is fully housed in order to guarantee absolute tightness against water and foreign body ingress.

# MERCURIO RANGE

COMPACT ALUMINIUM FLOODLIGHTS FOR OUTSIDE AND INSIDE

GEWISS

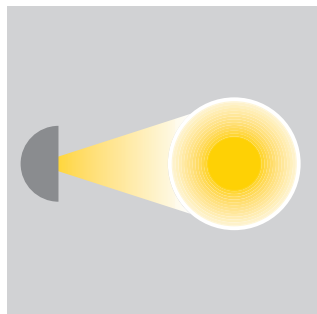
## CHARACTERISTICS AND ADVANTAGES



### ◀ A COMPLETE RANGE

The new family of floodlights of the MERCURIO range presents a complete range of optics: symmetrical, asymmetrical, circular and street.

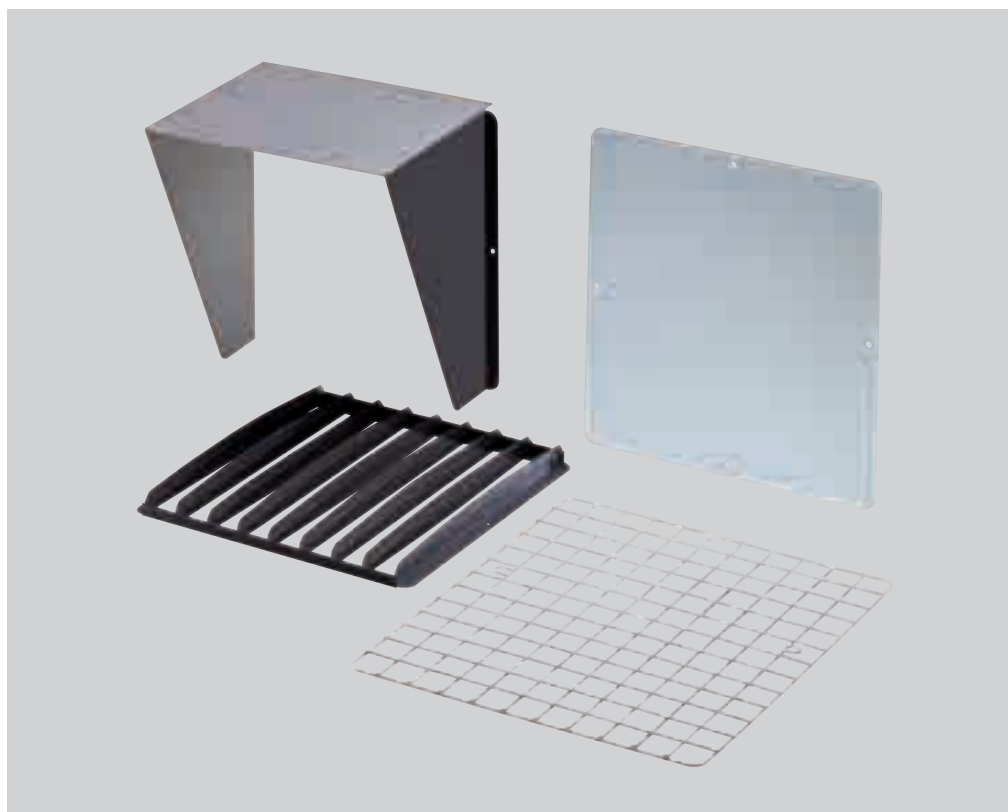
The ideal solution for each project can be found thanks to the mix of proposed optics and light sources.



### COLOUR RANGE

Graphite grey for applications in outdoor or industrial environments; aluminium for architectural lighting.

The polyester powder coating is applied only following an "Alodine 1200" corrosion-proof chromate treatment which guarantees a high level of resistance to corrosive agents and sea spray fog in compliance to the CEI EN 60068-2-52 Standard.



### ◀ ACCESSORIES

The vast range of optical accessories enables optimum safety of the tempered crystal and shielding in compliance with current rules and regulations on light pollution of the night sky.

All accessories can be mounted on the floodlights extremely easily, with a clip-on mechanism and without the need for tools.

MERCURIO RANGE