

Extro

LIGHTING AMBIENCES

Multipurpose luminaire for lighting residential and urban areas.

Casing in polycarbonate with 850° self-extinguishing rating and impact resistance greater than 20 J. Diffuser in tempered and sandblasted glass to eliminate the glare caused by direct viewing of the light source. Internal reflector in 99.85 stamped, anodized aluminium to obtain maximum light yield.

IP 55 protection rating, silicone seal and stainless steel external nuts and bolts.

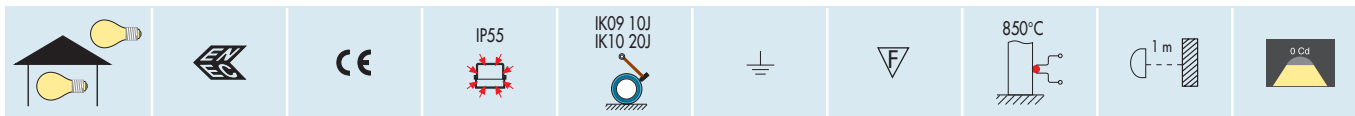
Possibility to install on wall, corner, 60 mm diameter round pole or special column.

Availability of 1.3 m columns complete with watertight support plate for inserting the SYSTEM rang components found in the EuroDomo catalogue.

NOW ALSO AVAILABLE IN EMERGENCY VERSION



CHARACTERISTICS AND ADVANTAGES

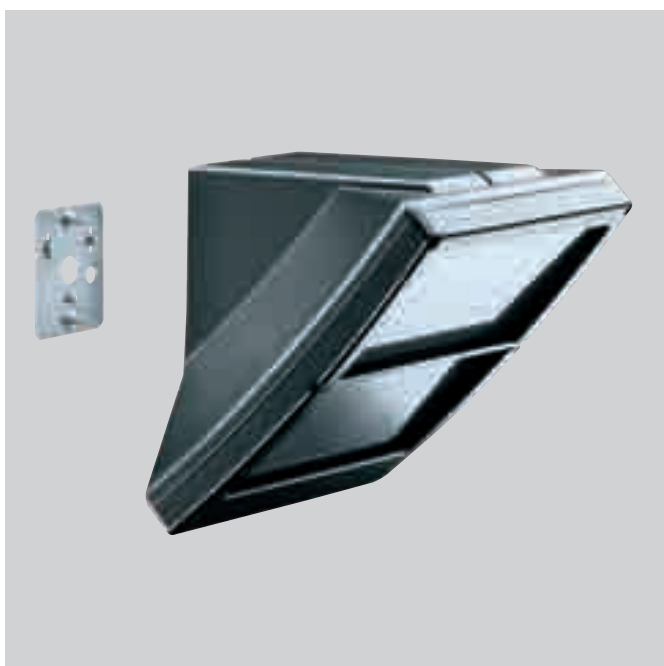


FOR ALL INSTALLATIONS:

The wide range of sources from 1380 to 8500 Lumen allows EXTRO to be used as a simple wall-mounted luminaire up to reaching residential lighting on h 2.5m dedicated column and 60 diameter round pole up to h 4.5 m.

RANGE							
GW 82 206	GW 82 206	GW 82 284	GW 82 286	GW 82 286	GW 82 281 S	GW 82 283 Q	GW 82 282 M
100 W IAA	23 W FBT	2 X 18 W FSD	2 X 26 W FSQ	2 X 32 W FSQ	70 SE	80 QE	100 ME
1380 Lm	1500 Lm	2400 Lm	3600 Lm	4800 Lm	5600 Lm	3800 Lm	8500 Lm

EXTRO RANGE



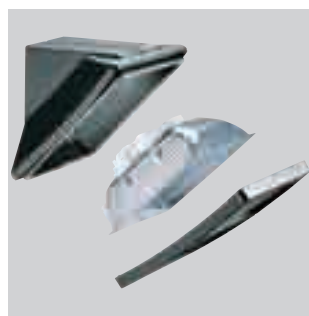
DIFFERENT MOUNTING POSSIBILITIES

The accessories for wall-mounting installation or installation on a round pole with 60 mm diameter are all in die-cast aluminium, protected against corrosion by Alodine 1200 chromate treatment and polyester powder coating for outdoors in grey or white finish.

The 1.3m h version columns are available complete with watertight support plate for inserting SYSTEM range components in the colours white and black found in the EuroDomo catalogue.

SIMPLIFIED INSTALLATION AND MAINTENANCE

The product's modularity makes maintenance and lamp changing operation extremely simple. The shield fixing screws are the unlosable type.



REFERENCE FIGURES FOR THE SUPPLY UNIT SYSTEM PLUS 36W NOMINAL LAMP

A1

A2

A3

B1

B2

B2= low voltage magnetic power supplies < 43 W

B1 = optimum low voltage magnetic power supplies < 41 W

A3 = electronic power supplies < 38 W

A2 = low voltage electronic power supplies < 36 W

A1 = Dimmer-enabled electronic power supplies < 38/19 W (at 100% - 25%)



ENERGY SAVING

The fluorescent versions that incorporate electronic power supplies are classified in accordance with the EEL classification index - Energetic Efficiency Index - in conformity with class **A2**, the highest classification attainable by non-dimmer lighting.

ADVANTAGES OF ELECTRONIC POWER SUPPLY

The fluorescent versions are recommended for interiors and in cases where the light has to be turned on and off with a certain frequency. The high frequency electronic power supply allows maximum visual comfort with stable light, immediate flutter-free ignition and absence of annoying humming to be obtained. Added to these advantages are also consumption reduction, longer service life of the lamps, safety cut-out of the power supply in case the lamp is exhausted or defective.

